



# EDI for Epicor *e*Manufacturing



**E**lectronic Document Interchange (EDI) is still an integral part of eBusiness. Today, more and more of your customers are demanding the electronic exchange of information. In fact, many are limiting their supplier lists to those that can handle EDI. They want to be able to send and change orders as their fluctuating production schedules demand, and they need their suppliers to be able to return advance shipping notices and invoices. With Epicor's *e*Manufacturing EDI, you can expand the market for your products and eliminate a great deal of paperwork. As an integral part of the overall Epicor *e*Manufacturing system, EDI can enhance your company's productivity and professionalism. Modular in design, Epicor *e*Manufacturing EDI may be installed at any point in your software implementation plan.

## **Breadth**

Supports ANSI X12 and AIAG documents, including:

- 810 Invoice
- 830 Planning Schedule (change order)
- 850 Purchase Order
- 856 Ship Notice/Manifest (ASN)

Epicor's Professional Services division can customize additional documents.

## **Trading Partners**

Set up any number of trading partners for both incoming and outgoing documents.

## **Tracking**

Tracks all relevant communication information, such as Supplier ID, Receiver ID and Mailbox Address.

## **Documents**

Incoming documents (830 and 850) may be reviewed online and compared to any current open orders.

## **Updates**

Ignore, add new or replace imported information into current system sites.

## **Implementation**

EDI can be implemented into Epicor *e*Manufacturing at any time.

## **Audit**

Full edit and print capabilities for incoming and outgoing transactions.

### Ease-of-use

Easy-to-use graphical interface allows you to send and receive files with a few clicks.

### Net Change

EDI Net Change Report provides an audit of before-and-after transaction data.

### History

Maintain a complete history of all transactions indefinitely.

### Online Help

An online instruction tutorial walks the user through the EDI process in an easy-to-follow format.

### Third-party Suppliers

EDI works with any EDI software supplier that can map data to ASCII files.

### Professional Services

Epicor's Professional Services division can customize and implement your EDI solution, including any transaction documents.

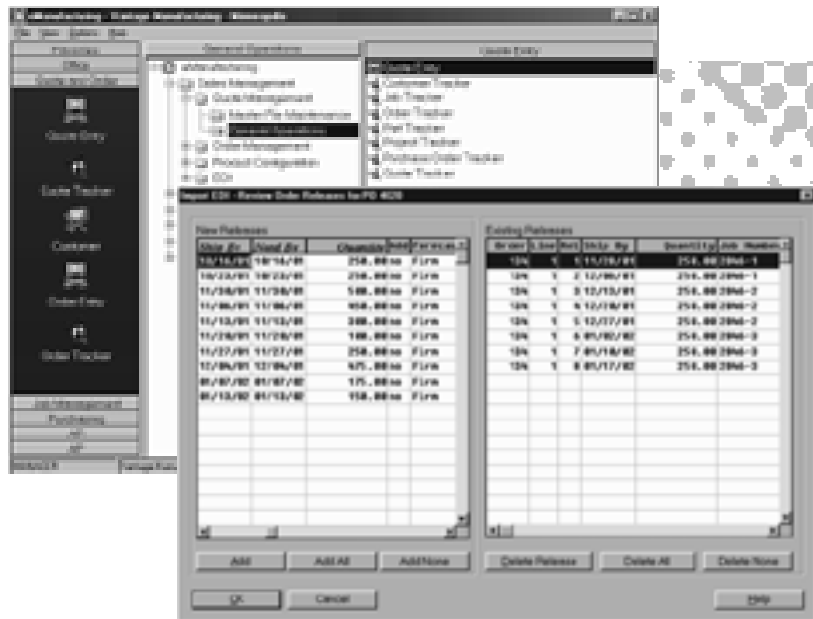
### Integration

EDI is fully integrated with the Epicor eManufacturing Order Entry, Shipping/Receiving and Accounts Receivable applications.

### Put the e into Your Manufacturing Business

Take advantage of the explosive opportunities offered by the new digital economy. Epicor eManufacturing can integrate your Front Office, Back Office and eBusiness systems to unlock the power of the Internet for your business and your customers. Let us put the e into your manufacturing business.

To learn more about Epicor eManufacturing, call us at (800) 449-6772 (U.S. and Canada) or (612) 544-7077 (international), or visit us at [epicor.com](http://epicor.com).



The Review Documents function of EDI Import processing displays all documents ready to import and allows you to make decisions on what you want to do before bringing the information into the Epicor eManufacturing database.



Worldwide Headquarters  
195 Technology  
Irvine, CA 92618-2402  
Phone: (949) 585-4000  
Fax: (949) 585-4419  
[epicor.com](http://epicor.com)

For Epicor eManufacturing information:  
600 South Highway 169  
2000 Interchange Tower  
Minneapolis, MN 55426  
Phone: (612) 544-7077  
Fax: (612) 544-8253

For Epicor's worldwide office directory, go to [epicor.com/contact](http://epicor.com/contact)